



Main Component	Technical Specification	
Integrated generator	Standard output power	5 kW
	Anode heat capacity	200 kHu
	Focus	0.3/0.6 mm
Detector	Size	9x9 / 12x12 inches
C-arm structure	Lateral Rotation	±180°
	Vertical travel	400 mm
	Horizontal travel	200 mm
	Wig/Wag range	±15°
	Depth in arc	640 mm
	Free space in arc	800 mm



CompaX 500
Surgical Mobile C-Arm System

Bröwiner

Shenzhen Browiner Tech Co.,Ltd
Add: Room 501, Building C, Ganghongji Hi-tech Intelligent Industrial Park, No.1008, Songbai Road, Yangguang Community, Xili Street, Nanshan District, Shenzhen, 518055, P.R. CHINA.
Tel: +86-755-22674696 Fax: +86-755-22674695 Website: www.browiner.com Email: market@browiner.com

Ver.:202202V01

Bröwiner

CompaX 500

Surgical Mobile C-Arm System



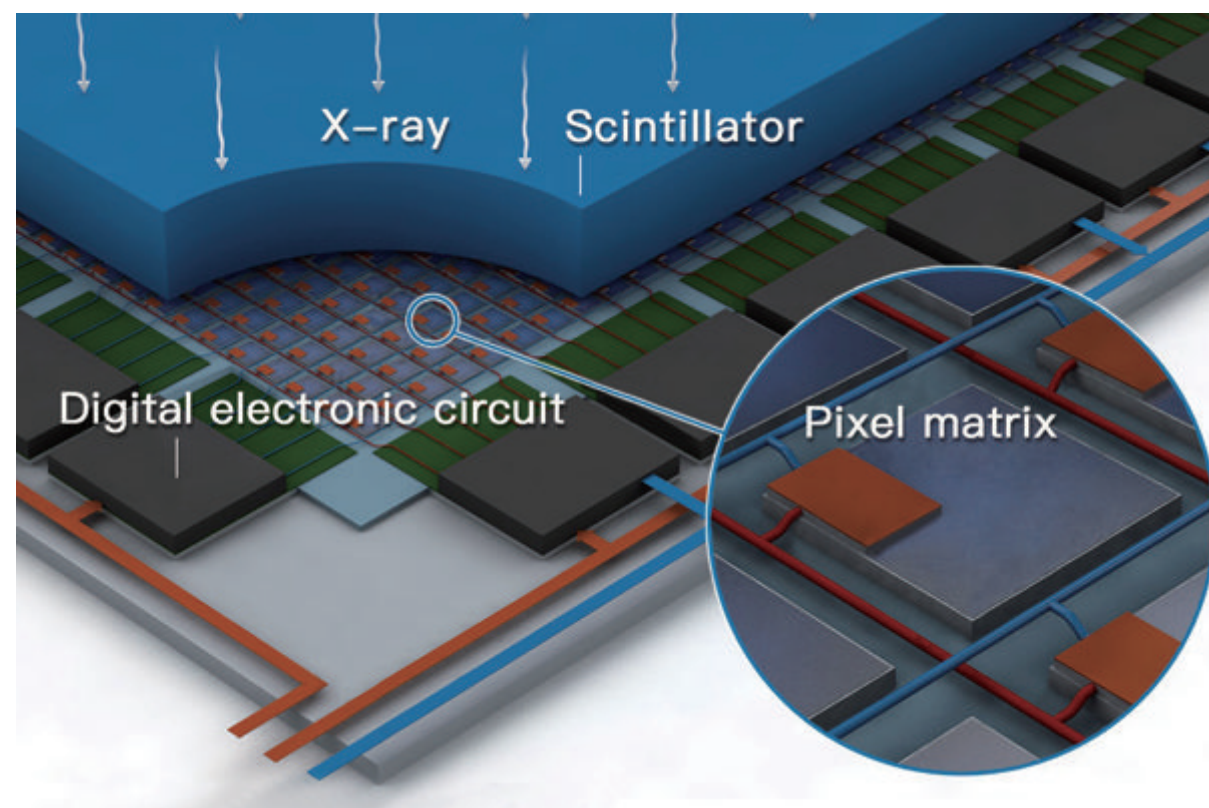
CompaX 500 comes with latest digital technology in the entire imaging chain that delivers excellent images and helps you see more details in surgery. It is the good choice for orthopedic surgery, pain management procedure, general surgery, urinary surgery, etc.



Excellent imaging

Multiple detectors for various needs

Image quality is of highly significance that helps doctors with more accuracy and certainty during surgery. Distortion-free, high-resolution and high-contrast images can be easily got by CompaX 500 thanks to flat panel detector technology, which offers great visualization of details with large field of view.



Intelligent Power Management

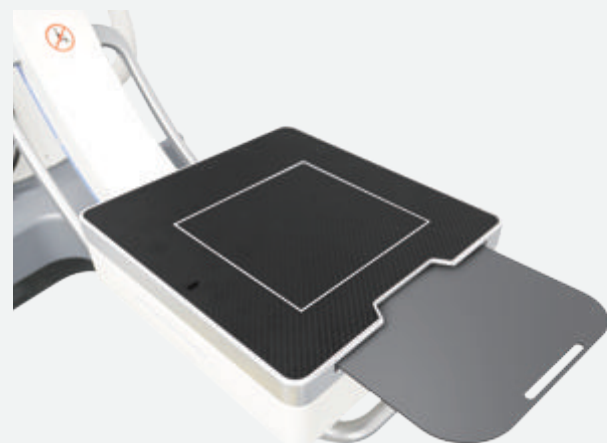
Multiple working modes can be switched freely as needed. The optical parameters will be set automatically according to surgical needs for sharp images with low dose.



High-quality image at low dose

Additional monitor cart (optional)

Additional monitor provides display of dynamic and static images at the same time. Doctors can enjoy large and comprehensive view for fine anatomical detail, allowing surgery with more highly efficiency.



Removable grid

Using a grid allows for images with higher contrast and higher resolution at lower dose for surgeries that require more detail by reducing scatter radiation.

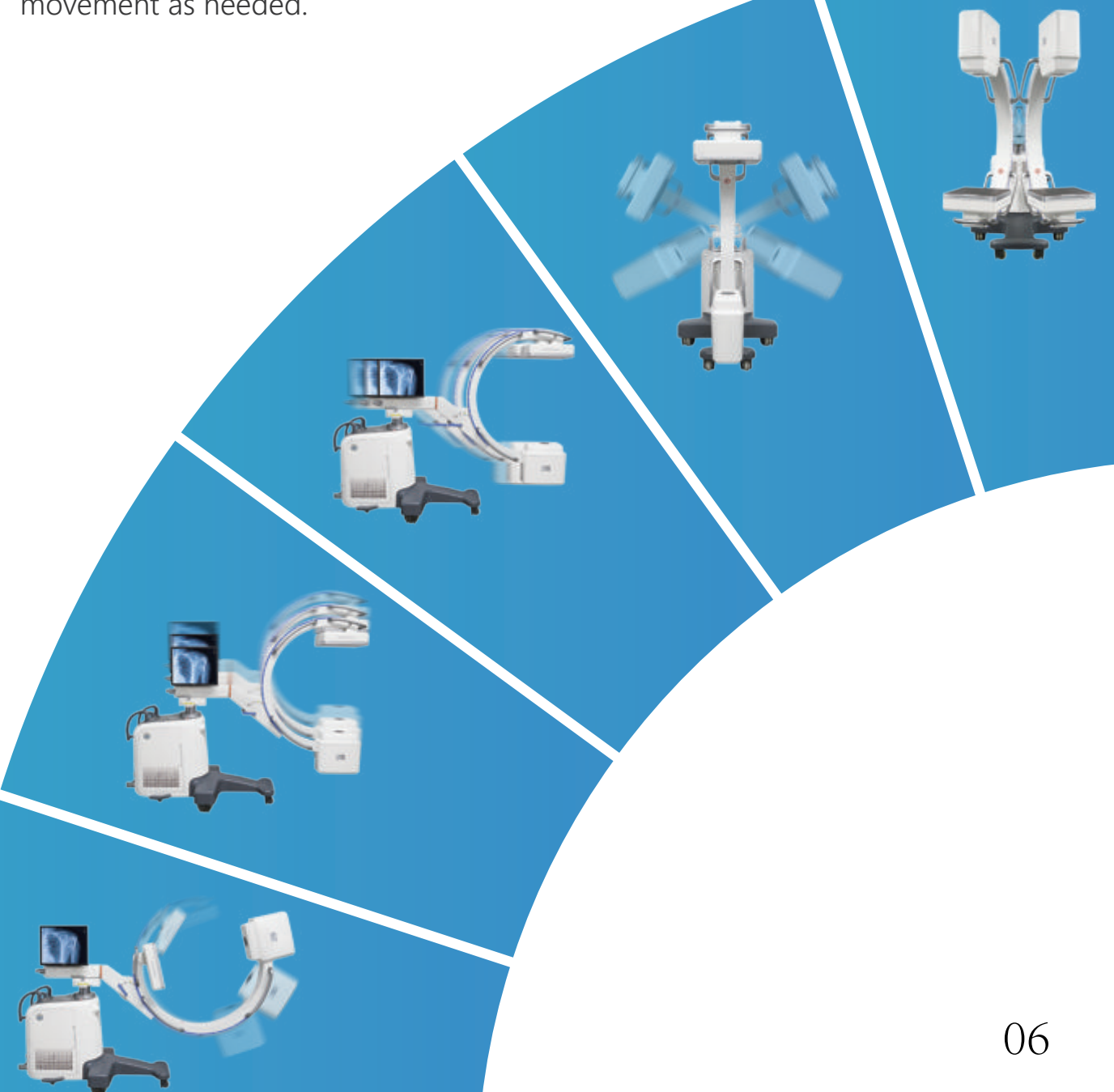
Flexible Movement

Isocentric C-arm design

Smooth and stable movement guarantees live imaging of targets.

Silent and comfortable moving

Compact and lightweight structure can achieve effortless movement as needed.



Easy Operation



Large C-arm geometry
Allows for more surgical space



Laser localizer
Faster and accurate positioning



Color-coded axis and handle
Easy and efficient maneuvering of C-arm



Footswitch
Allows efficient operation with more freedom



Dose area product
Real-time exposure dose display





Clinical Images

