

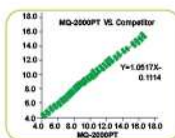
#### Specifications

Principle	Ion exchange chromatography with HPLC principle
Throughput	Sample cycle ≤ 160s/T
Sample	Sample aspirate volume: whole blood 10µl; diluted blood 150µl
	Automatic sample entry: on board capacity 50 samples, Non-stop
Testing	Wave length: 415nm
	Measuring range (NGSP value): HbA <sub>1c</sub> 4%-17%, r≥0.99
	Precision: CV≤2.0%
Operating Condition	Temperature: 10°C - 30°C
	Humidity: ≤80%
	Pressure: 79-106kPa
Power Requirement	Voltage: 220V
	Frequency: 50-60Hz
	Power: <100VA
Dimension	Length: width:height = 610mm*500mm*410mm
	Net weight: 28kg



#### Performance Data

##### Correlation



Sample Range(%)	Percentage	Sample required	Sample Qty
4-4.5	5%	50	10
4.6-6.0	20%	50	61
6.1-8.0	20%	50	62
8.1-10.0	20%	50	66
10.1-12.0	15%	30	33
>12.1	5%	10	15

Model	MQ-2000PT VS. Competitor
a	1.0517
b	-0.1114
r	0.9963

##### Reproducibility

	Intra-assay precision (n=20)		Intra-assay precision (n=20)	
Mean	5.67	8.74	5.75	9.98
SD	0.0813	0.1046	0.14	0.21
CV	1.43	1.20	2.38	2.15

##### Stability

QC	L	H
Mean(%)	5.68	9.96
SD	0.08	0.13
CV(%)	1.41	1.33

##### Effects of coexisting substances

Bilirubin - F	~ 19.7 mg/dL
Bilirubin - C	~ 21.0 mg/dL
Hemolytic hemoglobin	~ 488 mg/dL
Chyle	~ 1550 FTU
Ascorbic acid	~ 50 mg/dL
Glucose	~ 1200 mg/dL
Acetaldehyde	~ 60 mg/dL

No interference from coexisting substances up to above concentrations



## MQ-2000PT(HPLC)

Automatic HbA<sub>1c</sub> Analyzer

Your HbA<sub>1c</sub> Testing Total Solution...